

FIRST COMMERCIAL TITLE, INC.

690 E. PLUMB LANE

P.O. BOX 569

RENO, NEVADA 89504

TELEPHONE (702) 827-2200

RAY O'BRIEN
President

April 24, 1980

Board of Trustees
Washoe County School District
425 East Ninth Street
Reno, Nevada 89520

RE: Our No. 2917-M-LT

Gentlemen:

Enclosed please find the following:

Your Owner's Policy, along with a copy of the plat for your records.

If we can be of any further service to you, please do not hesitate to contact the undersigned.

We thank you for the opportunity of serving you.

Sincerely,

Kris Kelleher
Title Department

Encl.

RECEIVED

APR 29 1980

WASHOE COUNTY SCHOOL DISTRICT
PLANT FACILITIES DEPT.

TANTARA THEATER BLDG.
INCLINE VILLAGE, NEVADA 89450
P.O. DRAWER AF
(702) 831-0179

BRANCH OFFICES

468 "F" ST.
HAWTHORNE, NEVADA 89415
P.O. BOX 1853
(702) 945-5537

american title insurance company

SCHEDULE A

Effective Date: April 21, 1980 at
4:19 P.M.
Amount of Liability: \$ 284,628.00

Code No.:

Order No.: 2917-M-LT

Policy No.:

JP 847760

Premium \$

859.00

INSURED

BOARD OF TRUSTEES, WASHOE COUNTY SCHOOL DISTRICT,

1. The estate or interest in the land described or referred to in this schedule covered by this policy is:
FEE SIMPLE
2. Title to the estate or interest covered by this policy at the date hereof is vested in:

BOARD OF TRUSTEES, WASHOE COUNTY SCHOOL DISTRICT,
a Body Corporate,

3. The land referred to in this policy is situated in the State of Nevada, County of Washoe,
and is described, as follows:

Parcel 2 of Parcel Map #945 for INCLINE VILLAGE GENERAL IMPROVEMENT DISTRICT, being a redivision of Parcel 1 of Parcel map #507, according to the map thereof, filed in the office of the County Recorder of Washoe County, State of Nevada, on September 26, 1979, under File No. 631770, Official Records.

FIRST COMMERCIAL TITLE, INC.,

Countersigned and Validated

BY


AUTHORIZED REPRESENTATIVE

kk

american title insurance company

SCHEDULE B

This policy does not insure against loss or damage by reason of the following:

PART I

1. Taxes or assessments which are not shown as existing liens by the records of any taxing authority that levies taxes or assessments on real property or by the public records.
2. Any facts, rights, interests, or claims which are not shown by the public records but which could be ascertained by an inspection of said land or by making inquiry of persons in possession thereof.
3. Easements, claims of easement or encumbrances which are not shown by the public records.
4. Discrepancies, conflicts in boundary lines, shortage in area, encroachments, or any other facts which a correct survey would disclose, and which are not shown by the public records.
5. Unpatented mining claims; reservations or exceptions in patents or in Acts authorizing the issuance thereof; water rights, claims or title to water.

PART II

1. Taxes for the fiscal year 1979-1980, including any secured personal property taxes, collected together with charges levied by reason of said premises being within the Fire Protection District, a lien, not yet due or payable.
2. Sierra Pacific Power Co. and Bell Telephone Company of Nevada reserve the right to trim and remove trees, tree limbs and brush from the front ten feet of all lots and reserve a two feet by twenty feet public utility easement on both sides of all side lot lines for overhead guys and underground anchors, as recited on the Official plat of said subdivision.
3. The right to create easements and rights of way and all rights and reservations connected therewith as reserved in the recorded subdivision restrictions, covenants and conditions by Incline Village, Inc., a Nevada corporation, has been conveyed to Incline Village General Improvement District by document recorded April 21, 1970, in Book 457, Page 492, Document No. 171926, Official Records.
4. Easements are as shown on Parcel Map #507.
5. Covenants, conditions and restrictions, as contained in a Deed from Boise Cascade Home and Land corporation, to Incline Village General Improvement District, dated November 16, 1977, recorded October 13, 1977, in Book 1168, Page 174, Document No. 503002, Official Records.
6. Easements are as shown on Parcel Map #945.

RING

SHOWN ON THE
ON MAP.

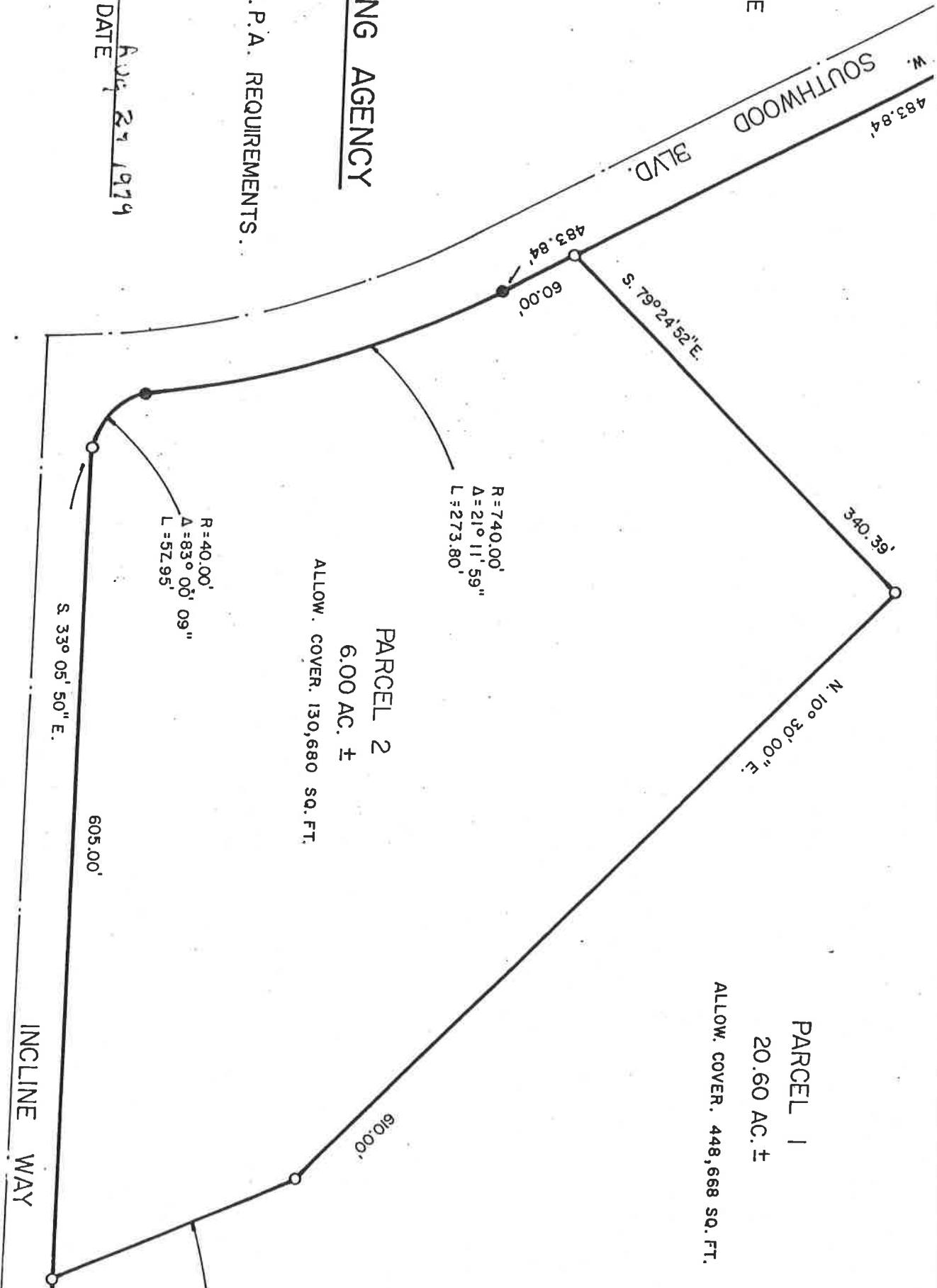
AL PLANNING AGENCY

FORMS TO T. R. P. A. REQUIREMENTS.

2 copies for
DATE Aug 27 1979

CERTIFICATE

I, DO HEREBY CERTIFY THAT THIS MAP IS A TRUE
OF THE LANDS SHOWN HEREON, TAKEN FROM
RYVEY MADE BY ME IN 8-26 1979, AT THE
I DO FURTHER CERTIFY THAT



UTILITIES COMPANY CERTIFICATE

I HEREBY CERTIFY THAT I HAVE EXAMINED AND APPROVED THE
EASEMENTS SHOWN ON THIS PARCEL MAP TO BE USED BY MY COMPA